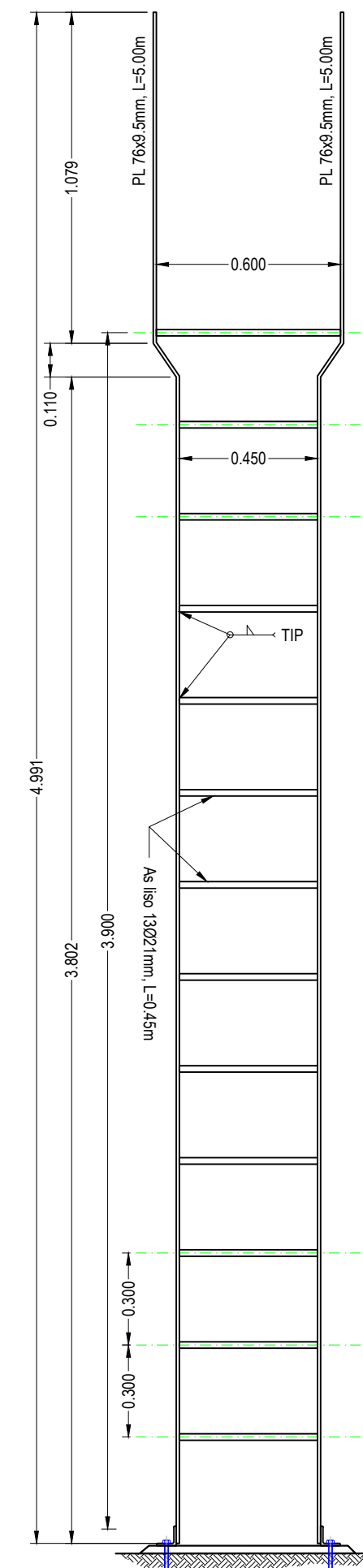
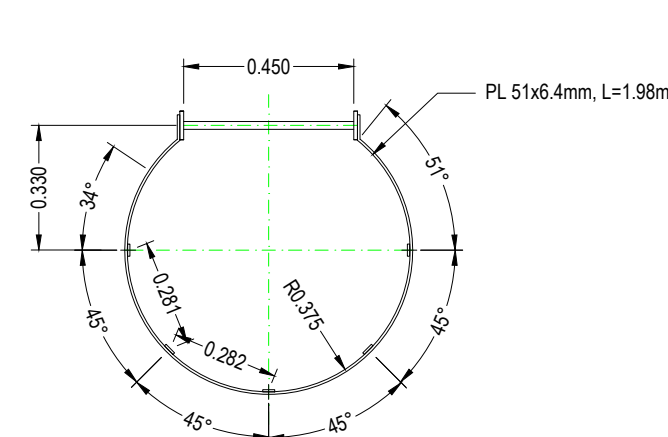


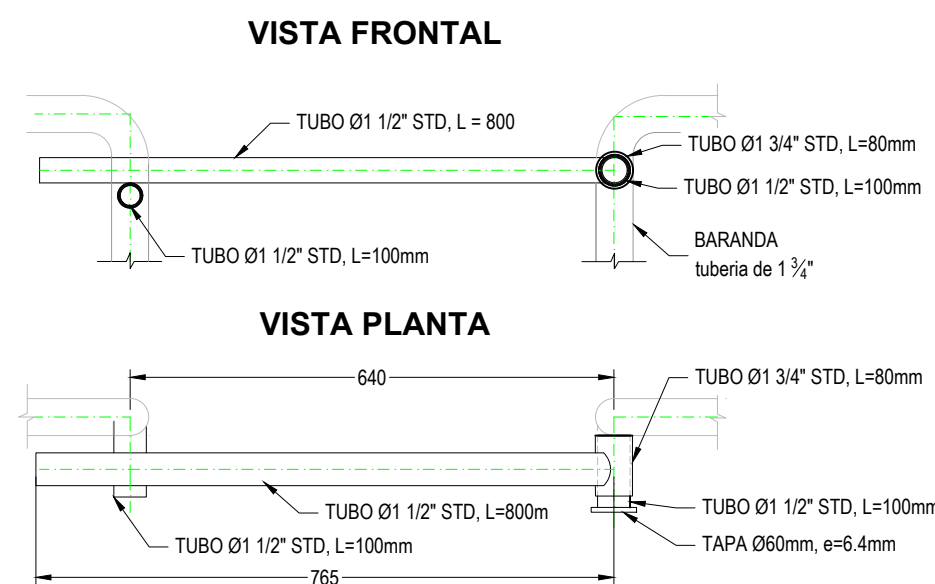
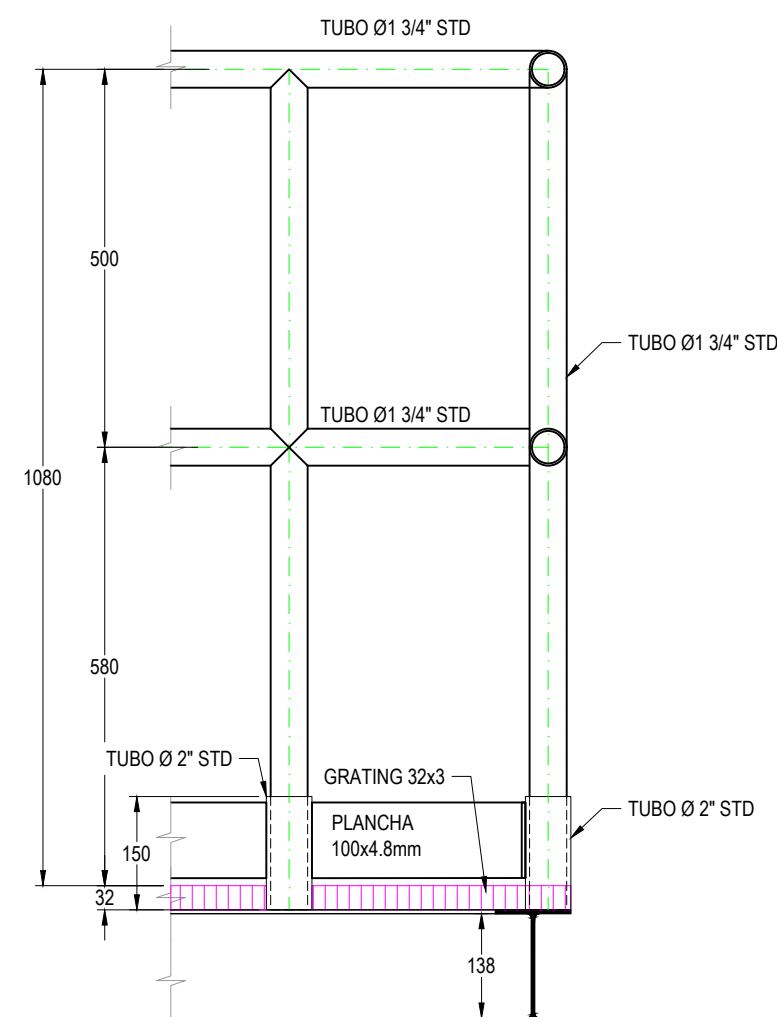
ESCALERA.
ESC 1:20



CORTE B-B



VISTA FRONTAL



PERNOS Y TUERCAS		
DETALLE	UNIDAD	CANTIDAD
PERNOS ASTM A325 1/2" x 1 3/4"	Pza	24
PERNOS ASTM A325 1/2" x 2"	Pza	44
PERNOS ASTM A325 3/8" x 1 1/2"	Pza	2
TUERCAS ASTM A-194 B7 O A-563 Gr.B Ø1/2"	Pza	92
TUERCAS ASTM A-194 B7 O A-563 Gr.B Ø3/8"	Pza	4
ARANDELA PLANA ASTM F-436 Ø1/2"	Pza	184
ARANDELA PLANA ASTM F-436 Ø3/8"	Pza	8
PERNO DE ANCLAJE TIPO HILTY 1/2"x5"	Pza	2

TODOS LOS PERFILES, PLETINAS Y CHAPAS SON ASTM A36

YPFB TRANSPORTE S.A.

<p>Plano de Cortes y Detalles</p> <p>Escaleras, Barandas y Grating para Plataforma Filtro F-200</p>	<p>Formato:</p> <p>A1 : 594 mm x 841 mm</p>
---	---